



# BRANCHES



## PAINT BRANCH UNITARIAN UNIVERSALIST CHURCH

*Affirming and promoting the inherent worth and dignity of every person since 1954*

### February 2019

#### SUNDAYS at 10:00 am

Nursery Care in Room 6 from 9:45-12:45  
Refreshments and Fellowship after the service  
Adult Enrichment Hour from 11:45-12:45  
Childcare until 12:45

#### FEBRUARY 3

#### BELONGING

Rev. Rachel Christensen, Minister; with Chris McCann, DMRE; Mary Rooker, Worship Associate; and the Choir  
What does it mean to belong? Join us as we explore the theme of belonging on this Reimagining Sunday. New Members will be recognized at this service. And a New Member Recognition

#### FEBRUARY 10

#### BORN THIS WAY

Chris McCann, Director of Multigenerational Religious Exploration; with Jeri Holloway, Worship Associate  
Have you ever wondered what a pop singer, an end-of-the-world touting radio preacher and a UU Religious Educator have in common?

#### FEBRUARY 17

#### EV'RY TIME I FEEL THE SPIRIT

Rev. Rachel Christensen; with Clark Ritz  
Worship Associate

The rich music of Spirituals and Gospel are important then and now in the development of our American Music traditions. We explore the meaning and importance of the music. The music is an Auction item for Margaret Morrison.

#### FEBRUARY 24

#### TWO HEARTS FOR JUSTICE

Rev. Eleanor Piez, Guest Minister; with Paul Wester,  
Worship Associate and the Choir

Poet Marilou Awiakta wrote: "Creation often needs two hearts, one to root and one to flower..." The work of social justice is our flowering heart that reaches outward to the world with beauty and compassion. Let us discover the rooted heart, that our flowering heart also needs.

(Read more about Rev. Piez on page 7)

### Notes from the Minister

I have been thinking about how we ask questions, and how we find the right questions. I read the book *Wait, What?* by James E. Ryan, Dean of Harvard Graduate School of Education. He talks about what he calls Life's Essential Questions. They are:

**Wait, What?** – to help us find clarity and understanding. What did you mean? what do you really mean? How do I understand that?

**I wonder...** – to explore, be curious, creativity, possibility.

**Couldn't we at least...** – maybe the start of finding common ground; the beginning of progress.

**How can I help?** – the beginning of relationship; expressing humility; and faith that the other person knows what help might really look like.

**What really matters?** – finding and discovering the heart of life.

I wonder what the essential questions are for us, here at Paint Branch.

The right questions can open us up to insight, seeing things differently and better decision making.

At a recent workshop on racism and dismantling white supremacy put on by our Regional Staff, the question was asked, what are we blind to?

And I wonder, What are we called to be or do? What breaks our heart?

But at least half of the work of asking good questions, the right questions, essential questions, is learning to listen. Being quiet and still as the answers come. Listening to our heart and our companions. Listening to the walls and the institution speak, and bring us clarity. This is sometimes hard work. We have so much to say, we forget to listen.

Today, as I write this, I will be participating in a half-day silent retreat. The sky is grey and the storm is coming. There have already been a few snowflakes and bitter cold is predicted. I am grateful to be here, as a chance to listen to my heart, to listen to Paint Branch, to listen to the walls and the woods.

Let us begin.

*Rev. Rachel* [minister@pbuuc.org](mailto:minister@pbuuc.org)

Paint Branch: Healing Hearts, Building Community, Nurturing Spiritual Growth and Helping to Heal the World.



Visitors are welcomed every Sunday, so please invite a co-worker, the new family on your block, or an old friend.

## Table of Contents

February Sunday Services	Page 1	Paint Branch Legacy Fund	Page 4	MLK Documentary Features PB'r	Page 6
Notes from the Minister	Page 1	Green Team	Page 4	In and Around Paint Branch	Page 7
PBUUC Leadership Directory	Page 2	Committee on Ministry	Page 4	PBUUC Chili Cookoff Feb 16	Page 7
Board of Trustees	Page 3	DARTT	Page 5	Membership Committee	Page 7
Religious Exploration	Page 3	Women's Retreat	Page 6	Meet Our Guest Speaker	Page 7
Stewardship Committee	Page 4	Goodloe Scholarship	Page 6	Note to Readers	Page 8

## PBUUC Leadership Directory

### 🌀 Officers and Board of Trustees 2018-2019 🌀

email: [BoardOfTrustees@pbuuc.org](mailto:BoardOfTrustees@pbuuc.org)

Chair	Kate Brett
Vice-Chair	Noel Monardes
Vice-Chair	Marguerite Summers
Trustee	Carmelita Carter-Sykes
Trustee	Ebony Contreras
Trustee	Kay McGraw
Trustee	Eric Most
Trustee	Wendy Schlegel
Trustee	Kathi Yu
Treasurer	Tess Morrison
Assistant Treasurer	David Nation
Secretary	Carol Boston
Assistant Secretary	Jennifer Wright

### 🌀 Worship Associates 🌀

* Mary Rooker (2016-19)	Tricia Most (2018-21)
* Paul Wester (2016-19)	Clark Ritz (2018-21)
Elizabeth Porter (2017-20)	Samantha Evans (Young Adult)
Jeri Holloway (2017-20)	*Team Leaders

### 🌀 Pastoral Care Associates 🌀

Jeri Holloway  
Lynn Johnson  
Mike McMenamin

### 🌀 We Care Coordinators 🌀

VACANT

### 🌀 Chartered Committees and Teams 🌀

Arts Council	Pat Tompkins (Music)
	Pat Tompkins (Visual Arts-ACTING)
Adult RE	Louise Waugh
Auction	VACANT
Budget Leadership Team	VACANT
Buildings & Grounds (co-chairs)	Lowell Owens & Peter Wathen-Dunn
Diversity/Anti-Racism Transformation Team (DARTT) (co-chairs)	Carol Carter Walker
Denominational Affairs	Emma Sue Gaines-Gerson
	Don Gerson, Chair
	Bettie Young, cluster rep.
Electronic Communications	<a href="#">contact church office</a>
Endowment	Chris Evans
Finance	Elaine Shell
Green Team (co-chairs)	Moe Cunningham
	Kathleen Bartolomeo
Leasing	Joe Dever
Membership	Pat Behenna
Ministry	James Alexander, Janet Overton and Elizabeth Porter
Nominating	Liz Citrin
Personnel	COMMITTEE IN HIATUS
Religious Exploration	Melissa Graham
Social Action (SAC)	Don Henderson
Stewardship	Chris Evans

### 🌀 Groups and Activities 🌀

Bookstore	Raman Pathik
Chalice Dancers	Sherry Mitchell
Children's Choir	Jeanne Judd
Choir	David Chapman
Coffee Coordinator	John Bartoli
Community Café	Alice Tyler
Food for Thought	Mary Rooker
Handcraft Circle	Ebeth Porter
Facebook Group	Ken Montville
Men's Group	Peter Wathen-Dunn
Mental Health Support Group	Alice Tyler
Mom's Group	Penney Hughes
Quest Discussion Group	Lowell Owens
Paint Branch Community Learning Center	Carmelita Carter-Sykes
Shamanic Journeying	Mary Rooker
Spirituality Circle	Amy Steiner
Sunday Sound & Facilities Volunteer Team	Van Summers
Third Wednesday Lunch Club	Elaine Shell
Ushers	Lori Snyder
Warm Nights	Van Summers
Webmaster	Mark Shute
Welcome Table Greeters	Anita Williams
Widowed Persons Support Group	Jeri Holloway
Women's Retreat Co-Leaders	Anne Hoover & Abigail Hanley

### Minister

The Rev. Rachel Rudd Christensen

### Minister Emeritus

The Rev. Richard Kelley

### Staff

Please contact the Church Office at 301-937-3666 for staff listed

<a href="#">Music Director &amp; Pianist</a>	David Chapman
<a href="#">Dir. of Multigenerational Religious Exploration</a>	Chris McCann
<a href="#">Chalice Dancers Director &amp; Choreographer</a>	Sharon Werth
<a href="#">Church Administrator</a>	Charles Bury
<a href="#">Affiliate Minister for Social Justice</a>	Rev. Karen Lee Scrivo
<a href="#">Bookkeeper</a>	Hannah Oshin
<a href="#">Administrative Assistant</a>	Hannah Oshin
Rentals Building Manager:	Joel Yesupriya
Child Care Providers:	Joy Washington
	Briana Workcuff

### Office Volunteers

Elizabeth Scheiman & Mary Massey (Alternating Tuesdays)	
Will Snyder (Wednesdays)	Janet Overton (Fridays)
Alice Tyler (Thursdays)	

## Board Chair Musings

It's cold, 14° when I came in this evening. It makes me thankful that I have a warm house to come home to and that I live in a place where this is the exception and not the rule.

At our Board meeting in January, we discussed how we take care of our buildings and grounds. We all agree that we have a lovely spot in the woods, that we love our sanctuary, that nature feels close when we are at church. And yet, PBUUC as a community tends to think about upkeep and repair only when it is obvious that something is needed. We were able to replace several of the heating/air conditioning units in the RE Building and sanctuary this fall before too many people were cold for long, but the fact is that we did wait to deal with the issue at the very last minute. We clean up twice a year, but can only do so much on those days. Painting of rooms is not regularly scheduled. The doors on the RE Building were rotting and not closing before it was decided that they needed to be replaced.

I do not fault the people involved in these decisions. We have developed a collective philosophy of not being able to afford upkeep – that we do things when they have to get done, but we do not think in terms of making a plan and scheduling upkeep because there is not enough money in the budget to do so. That there is enough money each time a crisis happens could be an indication that either we as a congregation actually do have enough or that we only give when there is no other option. I would like to assume the first.

This was some of the discussion that we had. We talked about wanting to start creating a schedule of future upkeep and budgeting ahead of time for it. It would require leadership of a group of people who would inventory the entire church and figure out an estimated timeline for repairing each item: replacing the roofs, waxing the floors, cleaning rugs, replacing rugs, painting rooms. Once a schedule was created, and each item was estimated, we could start creating an annual budget request for long-term maintenance that has a basis of calculation. It would not be a quick job, but it would be satisfying to the many people who come through our doors.

I encourage you to look around the church next time you come in and consider the items you would put on that list that should be scheduled for cleaning/replacing/repairing over the long term.

*Hoping your New Year is off to a good start,*

— *Kate Brett*, Board Chair

### Board Calendar for February:

**Executive Committee: Monday, February 15, at 7 pm**

**Read-Aheads due: Tuesday, February 19**

**Board Meeting: Tuesday, February 26, at 7:30 pm**

## Multigenerational Religious Exploration



Happy February everyone! As I write this, we are three weeks into the new year and no matter how I try to ignore the impulse, the beginning of a new year makes me think of how I'm going to do things differently. Like, everything. I'm going to organize my knitting supplies, create and stick to a training program for the dog, deep clean the entire house, aspire to buy and eat more vegetables, finally learn to perfectly juggle priorities at work. Revitalization across the board. Right? Three weeks in and please don't ask me how many of these things I've actually accomplished or really even given a good go.

One thing I do know about this year is that we, you and I, have a lot of good and exciting work ahead of us in reimagining how we approach Religious Exploration. Did you know that several years ago, the DMRE and the RE Team created a Faith Formation Plan? Some of that work was implemented, some of it fell away. All natural parts of the process of any good plan. Changes in staff and in the leadership of the RE team at PBUUC, as well as innovative work in UU Religious Exploration allows us an opportunity to revisit the plan and to refresh our ideas about providing excellent Religious Exploration. The MRE Team will be having their retreat later in February and we will be exploring the best ways for the MRE Team and the DMRE to work together as well as reimagining our RE program. I anticipate a new Faith Formation plan rolling out in the coming months and I encourage everyone to be on the lookout for information about this. I also invite you to think about your own role in Religious Exploration. Will you be a participant? An encourager? A supporter? A provider of helpful feedback? We need all of these in abundance as we move forward together.

I would also like to invite you to join me in worship on February 10th as I speak about the strange and wonderful experiences that inform the ways I think about and “do” Religious Exploration.

Here's to a satisfying 2019 and to being gentle with ourselves as we live into our aspirations, vegetables and all.

*Chris McCann*, [dmre@pbuuc.org](mailto:dmre@pbuuc.org)

Director of Multigenerational Religious Exploration



### Adult RE:

Does fighting the good fight leave you feeling a little spent? Come refresh yourself with Spiritual Practices for Warriors, each Sunday in March and April (except March 31) during Enrichment Hour. Details coming soon!



## Stewardship

Paint Branch is where we come together to “Treasure Our Church.” The 2019 Annual Campaign is all about sharing the riches of our time, our talents, and yes, our treasure in order to sustain our incredible sacred community.

The treasure hunt begins with our Visiting Stewards gathering for a swashbuckling training session on either February 10 OR February 17 during Enrichment Hour (note the date change). It's not too late to join us as a volunteer. Just let Chris Evans know that you're willing to join our hearty crew at [stewardship@pbuuc.org](mailto:stewardship@pbuuc.org). The Stewardship Committee will also be raising our sails to support the PBUUC Chili Cookoff on February 16. We hope everyone can come out for this great event.

The “Treasure Our Church” campaign gets underway with the Commitment Sunday service on March 3. Starting that day PBUUC members and friends will have three options to complete their pledge to include: 1) meet one-on-one with a Visiting Steward (highly recommended for those who are new to PBUUC). 2) attend our popular stewardship breakfast on March 10 or our pledging party at Tricia and Eric Most's home on March 23; or 3) find your way to where X marks the spot at the stewardship table in the lobby after any Sunday service in March. Choose what works best for you. I know that with your help our treasure chest will be overflowing.

*Chris Evans, Stewardship Chair*



## GREEN TEAM

### *Climate change won't destroy your planet. Just your children's and grandchildren's.*

As you read this, climate change is threatening our world, and we have a moral obligation to act. While you've probably read and heard a lot about climate change, the science behind it is complicated. Come spend 60 minutes connecting the dots between science, our climate, people and planet – and the solutions. Joyce Tuten is a high school science teacher who is expert at teaching science to non-science people. She is also a member of the Mid-dletown, MD Sustainability Committee, a NOAA Climate Steward Educator and a trained Climate Reality Project Leader. Joyce will explain the science of the greenhouse effect and global warming and what humans are doing to cause the climate to change. Short but information-dense, her presentation will bring to life the chain of events happening around the planet. Joyce will end with the many solutions that we can all be a part of! Walk away as a new ambassador for understanding and an agent for change that will last generations.

Please join us for this critically important presentation on **Sunday March 3, 2019 at 12:30pm** in the Sanctuary at Paint Branch Unitarian Universalist Church, 3215 Powder Mill Road, Adelphi, Maryland 20783-1097. A light lunch will be provided at noon. While donations are not required, they are appreciated.

This program is sponsored by the PBUUC Green Team.

For more information, contact Moe Cunningham – 240-461-7224 or [mcunningham1952@gmail.com](mailto:mcunningham1952@gmail.com)

## Paint Branch Legacy Fund

### Grant Terms:

The Paint Branch Legacy Fund was created in 1998 to help fund special projects or programs outside of the normal operating expenses of the church. These special projects or programs are reviewed by the Endowment Committee and recommendations for funding are provided to the Board of Trustees for final approval.

The Endowment Committee has created a procedure for requesting funds. The requisite request forms are made available each January and can be picked up from the church office or from the Chair of the Endowment Committee.

Once a Grant for a special project or program has been made, the person or group obtaining the grant agrees:

1. The special project or program can take no longer than one (1) year to complete. Any money from the grant not used within one (1) year of the date the grant was approved will be returned to the Paint Branch Legacy Fund,
2. To acknowledge the grant from the Paint Branch Legacy Fund in their promotional material and general informational materials,
3. To provide a report to the Endowment Committee about the special project or program, its benefit to the church and a brief summary of the process, and
4. Special projects or programs taking longer than one (1) year will not be considered.

## Committee on Ministry (CoM)

Greetings from your Committee on Ministry! Part of our duties as CoM is to oversee and conduct a regular evaluation of our called minister, Rev. Rachel Christensen. The first ever of these evaluations is coming up quickly! We will be hosting both an online survey and a series of in person focus groups, starting on February 16, 2019. Today, invitations to participate in either the online survey or the in person focus group will go out to a randomly selected sample of our members and friends. Please be on the lookout for this invitation and let us know, as soon as possible, whether or not you are able to participate. Thank you for your continued commitment to our church and community.

*Ebeth Porter, on behalf of the CoM*



## Diversity/Anti-Racism Transformation Team

### **Want to Receive Information about DARTT-Related Events?**

DARTT's monthly meeting is scheduled during Enrichment Hour on the third Sunday of every month, year round. We have had to cancel the meeting a few times, mostly due to a conflicting event, usually sponsored by DARTT. This month, we have initiated a Fast Track Update, an electronic mailing of information that would normally be covered in our meeting. These Updates do not take the place of scheduled meeting and are issued only when we don't meet or when there is fast-breaking news. If you'd like to receive these updates, please send your name and e-mail address to

[DARTT@pbuuc.org](mailto:DARTT@pbuuc.org).

### ***If You Want To Go Fast, Go Alone. If You Want To Go Far, Go Together. Thank You.***

This was the theme of the 10<sup>th</sup> Annual Kwanzaa Service/Feast At Paint Branch. I think it is meaningful that it is also the tagline on the website of Angela Alsobrooks, new Prince George's County Executive. This note is a thank you not only for the public faces of DARTT's recent activities: Service/Program on Native Americans, presentation by the Anti-Defamation League, and the Kwanzaa Service. A big shout out to the Volunteer Sound Team and Sunday Morning Teams. Your behind-the-scenes work made the efforts of the public faces look seamless. Thank you.

### ***Calling All Paint Branchers: Write an Op-Ed for the Branches DARTT Column.***

This month, DARTT returns to the practice initiated by Tricia Most, a former DARTT Co-Chair, to have a monthly thought piece on some aspect of anti-racism transformation. The first piece is by Margaret Morrison. She recounted this powerful story and read from the original of her remarks while we were planning the 2019 Dr. Martin Luther King, Jr. Sunday.

### **DARTT OpEd for February**

Margaret Morrison

I worked for a decade at a Chicago South Side high school that had served the neighborhood since 1905. Over the years, the neighborhood grew from all white to include other groups. The school's 2,500 student population was 40% white, 20% Latino, and 40% Black. I was a history teacher at the school for two years and in 1965 became the first Black counselor. In 1968, I became the first Black assigned assistant principal. The school was a hotbed of racial tension. Both positions were stressful, but they were also the most rewarding of my career. I can say with certainty that I, with student help, succeeded in creating positive change within the school environment.

Dr. Martin Luther King, Jr was assassinated on April 4, 1968. I was asked to organize an assembly to pay tribute to him the following year. Below are excerpts from my remarks to the assembled teachers and students on that day.

### **A Tribute to Dr. King, Thursday, April 3, 1969.**

"It was with a sense of hope and optimism that I accepted the sponsorship of this memorial assembly. However, as I stand before you at this moment, a great deal of my faith is crushed and bleeding. Perhaps at no moment in my life have I felt a greater sense of anger and frustration and hopeless despair. It seems that some people are so prejudiced and so bigoted that they will never accept Black people as human beings.

Dr. King was a gentle person who never harmed anyone. He never hated. He tried to transcend his enemies with nonviolence and love. As I tried to coordinate the student speakers for this assembly, more than one of my volunteer white student speakers was pressured into withdrawal from the assembly. White teachers, my colleagues, criticized and belittled these white students because they dared pay tribute to the memory of a kind and gentle Black man - a man who had committed no crime other than to insist that all Americans, regardless of color, should be granted the same opportunities and privileges. One white female teacher said to one of the prospective white student speakers: "I didn't know that you were one of those kind. You must be crazy"! Another student was physically threatened because of his intended participation.

I cannot avoid a heaviness of heart as I stand before you today. My experiences of the last forty-eight hours have thrust in my face the terrible fact that the hatred and bigotry that Dr. King died to erase are deeply rooted and unashamedly practiced here at this school.

I shall go on with this program, but with a prayer that Dr. Martin Luther King Jr. shall not have died in vain . . . only with a prayer that the ideals of liberty and justice for all will not entirely vanish from our thoughts . . . only with the prayer that there are enough persons of good will among us to help us save ourselves from the destruction that follows in the path of racial hatred and bigotry."



## MARCH 2, 2019

### PBUUC WOMEN'S GROUP ANNUAL MULTIGENERATIONAL RETREAT

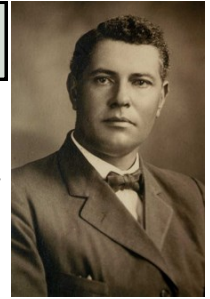
Recreate, breathe, rejuvenate! Join us for the annual PBUUC Women's Retreat on Saturday, March 2nd from 8 am to 5 pm, here at the church. We will

gather for breakfast and crafty name-tag making, then join in our opening ceremony. There is a morning workshop and two afternoon workshops, with lunch in between, and then our closing ceremony. Childcare is available, and this is a multigenerational event, if your older daughter or granddaughter would like to attend. Friends, relatives, neighbors: all are welcome. This year our theme is *Be the Garden You Want to Grow*. Our workshop schedule is still being finalized, but at past retreats workshops have included discussions, writing, crafts and movement. Each workshop session has multiple choices available: usually three choices per session, for a total of nine different workshops. In addition to the scheduled workshops, there will be a quiet room for reflection, a puzzle area in the foyer, and many opportunities to share fellowship and community. Sign up for the retreat after church during February, or online at <http://bit.ly/pbwr19>

Also, we still need a volunteer breakfast coordinator to ensure that our breakfast fixings are set up for all to enjoy, and a name tag co-leader for this year who can take over next year. To volunteer for one of these jobs, or if you have general questions, please contact one of the Co-Retreat Leaders, either Anne Hoover ([aehoover@hotmail.com](mailto:aehoover@hotmail.com) or 301-384-8578) or Abi Hanley ([mnemoscat@gmail.com](mailto:mnemoscat@gmail.com) or 443-255-4279). And if you would like to be a volunteer workshop leader, please contact Workshop Coordinator Kathi Yu at (best contact is [kathiyu@gmail.com](mailto:kathiyu@gmail.com), alternatives are cell 240-593-4650 and home 301-593-2853).

## Goodloe Scholarship

Don Speed Smith Goodloe was a teacher and innovator and principal of black public schools. Graduating from Meadville Theological Seminary in 1906 with a Masters of Divinity, he knew it was unlikely that he would ever be ordained as a Unitarian minister.



In 1911, he became the first principal of the Maryland Normal and Industrial School at Bowie for the Training of Colored Youth. This is now Bowie State University.

In 2004, The Bowie Unitarian Universalist Fellowship chose to recognize this Black Pioneer in a White Denomination by changing their name to Goodloe Memorial Unitarian Universalist Congregation. The congregation built a bridge to Bowie State University by hosting annual Goodloe celebrations and establishing a scholarship in Goodloe's name which is maintained and administered by the Maryland University System.

This year, Goodloe Memorial Unitarian Universalist Congregation has taken the difficult step to dissolve their congregation. Here at Paint Branch, we have been invited to hold the legacy of their work honoring Don Speed Smith Goodloe in the form of the history they have gathered, and to take on the sponsorship of the Goodloe Scholarship at Bowie State. We only hope that we can live up to and sustain the trust being placed in us in this work. We are honored to have the opportunity and grateful for the work they have done to date.

Mr. Ken Shilling, President of the congregation attended worship on January 20, along with about ten members of Goodloe Memorial. He presented us with their notebook documenting the history of Don Speed Smith Goodloe and their work in honoring him over the years. The notebook is being held in Rachel's office and is available for you to come look at it. Just let her know you are coming.

He further confirmed that the Goodloe Endowed Scholarship currently is over \$33,000.

### Rev. Dr. Martin Luther King, Jr. Service Filmed for a Documentary Featuring Member Margaret Morrison

Paint Branch member Margaret Morrison is one of six Resisterhood activists featured in a documentary being produced by Cheryl Crim, an award-winning independent filmmaker. Ms. Crim was filming during the January 20 Dr. Martin Luther King Jr. Sunday Service so that she could include portions in an upcoming documentary on Resisterhood. Here is Margaret's statement about her participation in the organization.

"As a Black woman reared in the South under Jim Crow Laws, I am aware of how those laws sought to make me believe that I was an inferior and worthless human being. My parents knew otherwise. They taught me that Jim Crow Laws exposed the white man's inhumanity, not mine. They told me that my worth as a person was inalienable. Many white people continue to "cling to" the mythology of white supremacy created during the dark days of the "peculiar institution."

I believe the United States is capable of becoming a "more perfect union." I march to affect that change. I march because I must. I march because I need to be with a group of like-minded people who believe in justice and equality and basic moral principles. I march because I'm a Black woman: I am a Resisterhood activist.

Mrs. Crim's Resisterhood documentary allows me to communicate our human struggles to a wider audience. I want to persuade more people to help us work for "a more perfect union."



## In and Around Paint Branch

### Red Maple Restaurant this Third Wednesday at 1 pm

On February 20 at 1 pm, the Third Wednesday Lunch group will return to the Red Maple restaurant in Silver Spring. Everyone seemed to enjoy the environment and Asian food when we went last year. It's at Four Corners where Rt. 29 and University intersect. The address is 10110 Colesville Rd, Silver Spring. If going south on Rt. 29, turn right at University (Rt. 193), then right at the next street (Sutherland Rd) and immediate right into the parking lot. You'll be entering from the back of the restaurant. Everyone is welcome. Call Elaine Shell if you would like a ride. 301-602-0590 (c).

**"Music at Paint Branch"** presents Pianist Jim Olson and the PG Creative Music Ensemble on Saturday, February 23, 2019 at 7:30 pm. This performance will feature a tribute to the late and great Cecil Taylor; a genius at creating pianistic soundscapes. This will be another opportunity to hear something new and different at Paint Branch. The program is free but donations are always happily accepted.

*Jeri Holloway* [holl5d@aol.com](mailto:holl5d@aol.com)

**Sunday Meeting Space:** Over the past 8 months we have been using Church volunteers for the Sunday services, and have no paid staff on site on Sunday mornings. When you have an event in one of our rooms, it would be helpful if at the end of your meeting or event if you would reset the space for the next user that is coming in. In most cases, that is nothing special, but sometimes we will let you know who is coming next and how you can help make that happen more smoothly. For example, in Rooms 2 and 3, it is helpful to return the folding chairs to Room 1, so that the room is more ready for the Silver Oaks Academy when they return on Monday morning.

If you need help either setting up for your event, or moving furniture at the end, there are usually other church members available to help make that happen. If you need help finding help, please let the office know and we will see what we can do.

### Men's Fellowship Breakfast at TJ's Restaurant

Our next Men's Fellowship Breakfast will be 10 am Saturday, February 12 at TJ's Restaurant in the Calverton Shopping Center, just up the road from PBUUC. Come share food and conversation. The food is good, and the conversation goes wherever you want it to go. This event is sponsored by the Paint Branch Men's Group. We intend to hold these breakfasts every second Saturday of the month. For more info contact: [mensfellowship@pbuuc.org](mailto:mensfellowship@pbuuc.org)

## PBUUC Chili Cookoff

Come on out on Saturday, February 16, for the first annual PBUUC Chili Cookoff. Doors open at 6:30 pm. Be there to taste **seven** different chilis, including a vegan option, and help crown the best chili cook at Paint Branch.

There will be multiple categories in the competition. Come listen to the music. Participate in the raffles. Have a great time! Five dollars for individuals and ten dollars for families. If you can't swing the money, come anyway.

Children welcome and childcare will be offered for those who need it (just let us know ahead of time). While many have already paid their way through auction bidding, the rest of you can sign up for tickets in the coming weeks after service and/or by contacting Eric Christensen [highgear3@gmail.com](mailto:highgear3@gmail.com) or James Alexander [jalexander40@yahoo.com](mailto:jalexander40@yahoo.com)

**Hearing Assistance.** We have two types of hearing assistance available during services for anyone whose hearing may make parts of the service hard to follow. If you have a hearing aid with a telecoil or T-coil setting, and switch to that setting, the sounds captured by the microphones at the front of the sanctuary will be sent directly your hearing aid. For listeners who don't have hearing aids or aids with a t-coil setting, hearing assistance devices are available that present the same clear signal to earbuds that connect to the device. See Pat Behenna, Abigail Hanley, or Van Summers to try one out!

## Membership Committee

### First New Member Welcoming Ceremony of 2019.

Rev. Rachel has scheduled a Welcome New Members ceremony during our Sunday, February 3, morning service.

## Meet Our Guest Speaker

Our guest speaker for Sunday, February 24 is Eleanor Piez. Eleanor is a third generation Unitarian Universalist now entering the ministry. She completed her M.Div. degree at Pacific School of Religion and served as Intern Minister with the UU Church of Annapolis and the UU Legislative Ministry of MD.

Before entering theological school she was a fundraiser and manager for grassroots, anti-poverty organizations, and a congregational and interfaith lay leader. Eleanor is the mother of two young adult daughters.

### Note to Our Readers:

The Church Administrator is responsible for the production of the newsletter.

**SUBMISSION OF ARTICLES FOR BRANCHES:** All submissions for inclusion in Branches should be submitted by email to: [branches@pbuuc.org](mailto:branches@pbuuc.org).

**The Leadership Directory**, (on page 2 of this issue), will contain names only. For more contact information, please consult your Membership Directory or call the Church Office at 301-937-3666. All submitted articles will contain phone numbers and/or email addresses for contact if listed. You may choose to list your email address only as a point of contact, and if requested, a pbuuc.org email specific to individual PBUUC committees, groups, or teams can be created.

### Editorial Guidelines

- The deadline for submission of articles and other content to Branches is on the **20th day of every month**, except during the holidays.
- Articles should be submitted in their final form and content should be **200—600** words. Please submit the name of the author and any other contact information as necessary. **Reminder: Articles significantly over the word limit may be returned to the author for re-editing.**
- The deadline for submission of announcements and other content to appear in the Sunday Order of Service Bulletin is **every Wednesday at 12 noon**. Announcements received by the deadline will be included in the ContinUUm weekly email. **Short announcements to be read by the Worship Associate during the Sunday Service are also due then.**
- **Sunday Bulletin announcements** should be submitted in their final form to [bulletin@pbuuc.org](mailto:bulletin@pbuuc.org). Content should be **120** words or less. Please try to keep announcements one paragraph with a clear headline or topic sentence. Please include day, date, location, time, and contact information. Announcements should be PBUUC related; non-PBUUC events must have an explicitly stated UU connection. Up to one paragraph more may be added for use in the ContinUUm weekly email.

All deadlines are now on the web calendar. Go to [www.pbuuc.org](http://www.pbuuc.org). Scroll down to “This Week” and click on

“More Upcoming Events.” Click on the Calendar grid to the left to advance to the next month.

PAINT BRANCH UNITARIAN UNIVERSALIST CHURCH  
3215 POWDER MILL ROAD  
ADELPHI, MD 20783-1030  
(301) 937-3666  
WEBSITE: [WWW.PBUUC.ORG](http://WWW.PBUUC.ORG)  
EMAIL: [CHURCHADMIN@PBUUC.ORG](mailto:CHURCHADMIN@PBUUC.ORG)